



Universal Air Distribution Product Systems

Ready On Demand.



©2026 Quality Air Equipment Pty Ltd

QPRO ®, Qline ® and QAE ® are registered trademarks of Quality Air Equipment Pty. Ltd.

ALL RIGHTS RESERVED. No part of this work covered by the copyright herein may be reproduced, transmitted, stored or used in any form or by any means graphic, electronic, or mechanical, including but not limited to photocopying, recording, scanning, digitizing, taping, web distribution, information networks, or information storage and retrieval systems, without the prior written permission of the publisher.

For product information and assistance, contact
Quality Air Equipment. +61 2 9724 9297

For permission to use material from this text or product, email inquiries to
marketing@qualityair.com.au

For all sales inquiries, email to
sales@qualityair.com.au

Quality Air Equipment Offices

New South Wales (NSW)

Quality Air Equipment Pty Ltd
Visit our factory: 1 Lyn Pde, Prestons, NSW 2170
Telephone: +61 2 9724 9297
Visit our website: <https://qae.com.au>

Western Australia (WA)

Visit our factory: 20 Fisher Street, Belmont, WA 6104
Telephone: +61 8 9277 6602
Visit our website: <https://qae.com.au>

QAE ASIA LIMITED

E-mail: sales@qae-hvac.com
Mobile/Wechat: +86 139 2497 0331
Visit our website: <http://qae-hvac.com>

Standard Order Process

for Qline Universal Fittings

Providing the required and correct information for orders may improve production lead time and reduce errors.

Standard

ALL SIZES are **NOMINAL**

NECK (Hole or Box Size) unless otherwise stated

1. Provide Box Type
2. Provide Dimensions
 - 2.1 Opening size of box
 - 2.2 Advice of any height restrictions
3. Specify spigot size, location and quantity
4. Specify insulation type and thickness



Contents

Cushion Boxes	4
V Boxes	5
Return Air Boxes/Plenums	6
Linear Boxes	6
Boots	7
Insulation	8
Collars	9
Blanking Plate	10
Duct Y Piece Modular	10
Bell Mouth Spigot	11
Plaster Board Frame	12
Drip Tray	12
Snap On Box	13



Additional Cost

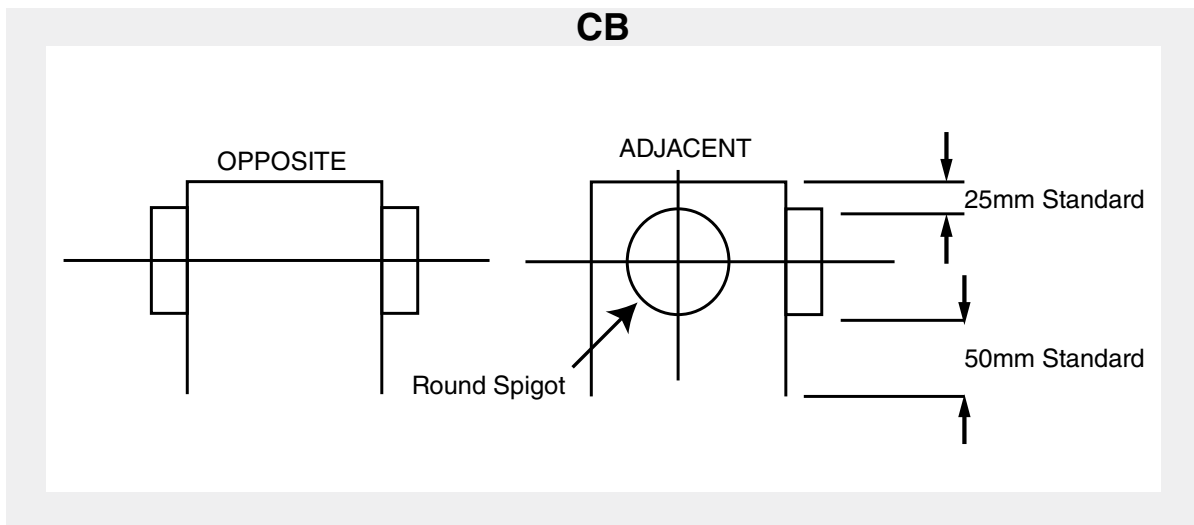
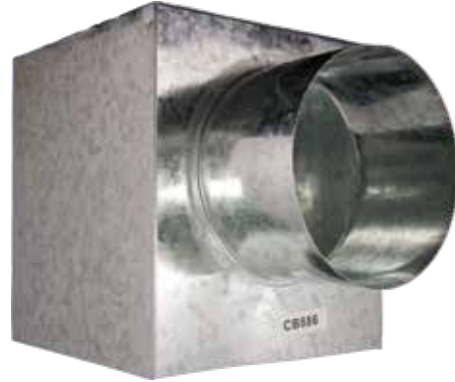
- Filter track and door
- Height exceeds standard
- Additional spigots
- Insulation
- Stepping a box to cover insulation
- Stepping a box to fit spigot(s)

Product Code
CB

Cushion Box

**On The Shelf
Cushion Boxes**

Product Code	Size	
	(mm)	(inches)
CB666	150 x 150 - 150	6 x 6 - 6
CB886	200 x 200 - 150	8 x 8 - 6
CB888	200 x 200 - 200	8 x 8 - 8
CB996	225 x 225 - 150	9 x 9 - 6
CB998	225 x 225 - 200	9 x 9 - 8
CB12128	300 x 300 - 200	12 x 12 - 8
CB121210	300 x 300 - 250	12 x 12 - 10
CB121212	300 x 300 - 300	12 x 12 - 12
CB151510	375 x 375 - 250	15 x 15 - 10
CB151512	375 x 375 - 300	15 x 15 - 12
CB18188	450 x 450 - 200	18 x 8 - 8
CB181810	450 x 450 - 250	18 x 18 - 10
CB181812	450 x 450 - 300	18 x 18 - 12
CB181814	450 x 450 - 350	18 x 18 - 14
CB222210	560 x 560 - 250	22 x 22 - 10
CB222212	560 x 560 - 300	22 x 22 - 12
CB222214	560 x 560 - 350	22 x 22 - 14



V Boxes**Product Code**VB1
VB2
VB3**1 Way****2 Way****3 Way**

PRODUCT INFO

Size	Standard Height 150mm
Options	Fresh air spigot Filter track & door Filter

Return Air Box / Plenum Top Entry



On The Shelf

**10mm Rubber Insulated
Return Air Boxes**

Product Code	Size	Spigot	
	(mm)	Ø (mm)	#
RAB560560/1X350-10R	560 x 560	350	1
RAB560560/1X400-10R	560 x 560	400	1
RAB600400/1X350-10R	600 x 400	350	1
RAB600400/1X400-10R	600 x 400	400	1
RAB750550/2X350-10R	750 x 550	350	2
RAB750550/2X400-10R	750 x 550	400	2
RAB900400/2X350-10R	900 x 400	350	2
RAB900400/2X400-10R	900 x 400	400	2
RAB900500/2X350-10R	900 x 500	350	2
RAB900500/2X400-10R	900 x 500	400	2
RAB900550/2X350-10R	900 x 550	350	2
RAB900550/2X400-10R	900 x 550	400	2
RAB1160560/2X350-10R	1160 x 560	350	2
RAB1160560/2X400-10R	1160 x 560	400	2



Return Air Box with 10mm rubber insulation

PRODUCT INFO

Size	Standard Height 75mm + Spigot Size
------	---------------------------------------

Product Code

RABS
RAPS

Return Air Box / Plenum Side Entry



PRODUCT INFO

Size	Standard Height 75mm + Spigot Size
------	---------------------------------------

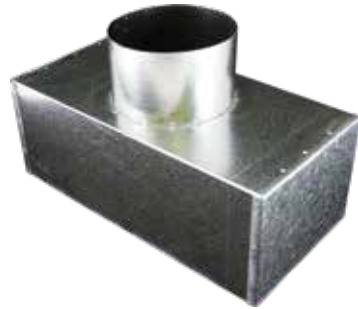
Product Code

LB

Side Entry Linear Box



Uni Boot Top Entry



PRODUCT INFO

Size	Standard Height 150mm
------	--------------------------

Product Code

UB

Side Boot Spigot On Long Side



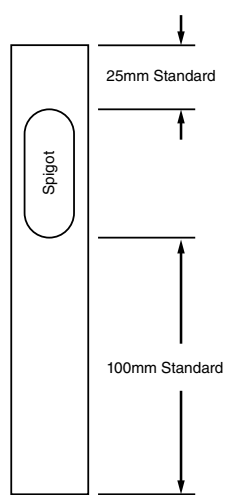
PRODUCT INFO

Size	Standard Height 150mm + Spigot Size
------	----------------------------------------

Product Code

SB

EB



End Boot Spigot On Short Side



Product Code

EB

Insulation	Sizes (mm)
Rubber	5, 10
Polyester	13, 25
Black Face Fibreglass	25, 38
Perforated Face Fibreglass	25, 38, 50, 75, 100

Rubber



Polyester



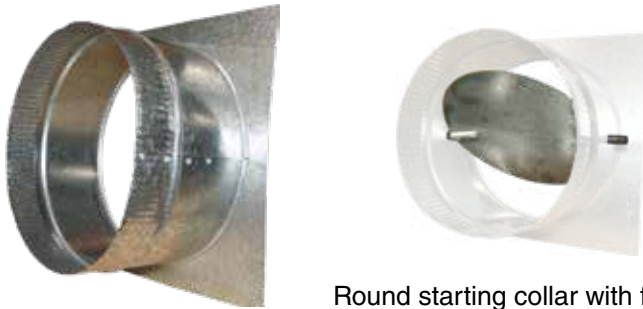
Black Face Fibreglass



Perforated Face Fibreglass



Round Starting Collar



Round starting collar with fitted volume control blade

Product Code		Size		Plate Size
		(mm)	(inches)	(mm)
	with VCB			
SC4	SC4VCB	100	4	150 x 150
SC5	SC5VCB	125	5	175 x 175
SC6	SC6VCB	150	6	200 x 200
SC8	SC8VCB	200	8	250 x 250
SC10	SC10VCB	250	10	300 x 300
SC12	SC12VCB	300	12	350 x 350
SC14	SC14VCB	350	14	400 x 400
SC16	SC16VCB	400	16	450 x 450
SC18	SC18VCB	450	18	500 x 500
SC20	SC20VCB	500	20	550 x 550
SC22	SC22VCB	550	22	600 x 600
SC24	SC24VCB	600	24	650 x 650

Joining Collar



Product Code	Size	
	(mm)	(inches)
JC4	100	4
JC5	125	5
JC6	150	6
JC8	200	8
JC10	250	10
JC12	300	12
JC14	350	14
JC16	400	16
JC18	450	18
JC20	500	20
JC22	550	22
JC24	600	24

PRODUCT INFO

Size	Standard Length 150mm
------	--------------------------

Ovalised Starting Collar



Ovalised starting collar with fitted volume control blade

Product Code		Size		Plate Size
		(mm)	(inches)	(mm)
	with VCB			
OSC4	OSC4VCB	100	4	163 x 120
OSC5	OSC5VCB	125	5	197 x 130
OSC6	OSC6VCB	150	6	241 x 130
OSC8	OSC8VCB	200	8	316 x 150
OSC10	OSC10VCB	250	10	386 x 200
OSC12	OSC12VCB	300	12	421 x 250
OSC14	OSC14VCB	350	14	474 x 300
OSC16	OSC16VCB	400	16	519 x 350
OSC18	OSC18VCB	450	18	561 x 400

Product Code	Size	
	(mm)	(inches)
CSC6	150	6
CSC8	200	8
CSC10	250	10
CSC12	300	12
CSC14	350	14
CSC16	400	16
CSC18	450	18
CSC20	500	20

Castellated Starting Collar



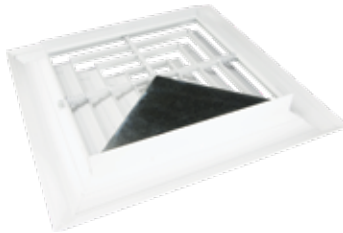
Special size castellated starting collars can be custom made to fit various thickness panels or metal products to meet specific requirements

Product Code	Size	
	(mm)	(inches)
BP150	150	6
BP225	225	9
BP300	300	12
BP375	375	15
BP450	450	18
BP525	525	21
BP600	600	24

Blanking Plate



Blanking plate fitted to a Qline 4 way Bevelled Edge diffuser to convert to 3 way blow



A Convenient Alternative

A blanking plate can convert a 4 way blow diffuser into a 3 way by restricting the airflow on one side. Alternatively, multiple blanking plates can convert to 1, 2 opposite or 2 way corner.

PRODUCT INFO	
Type	Duct Y Piece Modular
Material	Galvanised Sheetmetal 5mm Foil face rubber
Design	3 Castellated starting collars

Product Code
SY

Sizes		
Spigot Diameter (inches)	(mm)	Spigot Branches Combo (mm)
6	150	The spigots max size equals the main spigot diameter. Example: 150 x 150 x 150 or 150 x 100 x 100
8	200	
10	250	
12	300	
14	350	
16	400	
18	450	

Duct Y Piece Modular



Bell Mouth Spigot with Blade & Raised Quadrant



PRODUCT INFO	
Type	Bell Mouth spigot
Mount	Cushion box or rigid duct
Material	Aluminium
Design	Raised quadrant and blade

Product Code	Sizes		Units/ Box
	(mm)	(inches)	
BMS6	150	6	20
BMS8	200	8	20
BMS10	250	10	20
BMS12	300	12	20
BMS14	350	14	10

Raised Quadrant

Versatility

The bell mouth spigot is a versatile and functional product. It can be fixed directly on to a cushion box or rigid duct and the blade allows for airflow control. The raised quadrant provides fine adjustments and the wing nut firmly securing the blade in place.



Bell mouth spigot fitted on an insulated cushion box and rigid duct



Flexible duct fitted on bell mouth spigot



PRODUCT INFO

Type	Plasterboard Frame
Material	White powdercoated aluminium

Product Code	Internal size (mm)	Cut out size (mm)	Units/ Box
PBF450	450 x 450	470 x 470	10
PBF595	595 x 595	610 x 610	10
PBF595295	595 x 295	610 x 310	10
PBF1195595	1195 x 595	1210 x 610	10

Plaster Board Frame



PRODUCT INFO

Type	Drip tray
Material	Galvanised sheetmetal
Design	40mm heighth
	20mm PVC drain connector
	Drain on short side
Options	Cross Break

Drip Tray



On The Shelf Drip Trays

Product Code	Size (mm)
DT1100800	1100 x 800
DT1400800	1400 x 800
DT1500600	1500 x 600
DT1500920	1500 x 920

Snap on Box for Weatherproof Louvre & Half Chevron Grille

PRODUCT INFO	
Type	Snap On Box fitting
Colour	Black powdercoated
Material	Galvanised sheetmetal
Design	Snap on fit (screwless)
	Fits 1 or 2 standard brick sizes



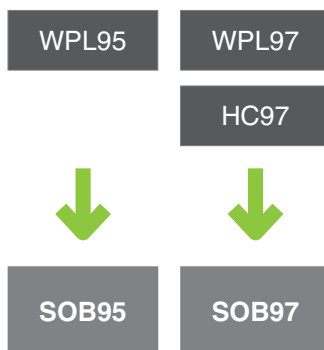
Product Code	Compatible Grilles	Size		Units/Box
		(mm)	(inches)	
SOB95	WPL95	225 x 125	9 x 5	18
SOB97	WPL97 HC97	225 x 175	9 x 7	18



Quick, Easy and Convenient

A compatible weatherproof louvre or half chevron grille easily locks in place with a push. Installation is made easier by eliminating the need for screws. This makes it ideal for challenging installation environments.

Sizes & Compatible Products



Snap On Box Weatherproof Louvre Half Chevron



Flexible Manufacturing

Our manufacturing capabilities allows us to produce a wide variety of special custom made sheetmetal fitting products to meet specific requirements.

Stepped Boxes



Boxes with Filter



Box with single deflection blades fitted





Universal Air Distribution Product Systems

Ready On Demand.

