

KEY FEATURES

- The diffuser core and trim ring are in aluminium die cast.
- Twirl plate and dirt trap are made from ABS plastic.
- Provides vertical air discharge pattern only.
- Dirt tray can be supply with or without damper blades.
- Removable diffuser core to clean the dirt tray.
- Maximum point load at the centre of the diffuser over an area of 25 mm² is 9 kN.

RECOMMENDATIONS

- Temperature differential of the supply air should range between 2 to 6°C.
- Hole size in the floor tile should be 268 ± 2 mm in diameter.

LEGEND

1. 250 mm diameter diffuser face.
2. Twirl plate.
3. Dirt trap.
4. Trim ring.
5. Overall height, H3 is 165 mm.

Type 'FBA/250' Floor Diffuser

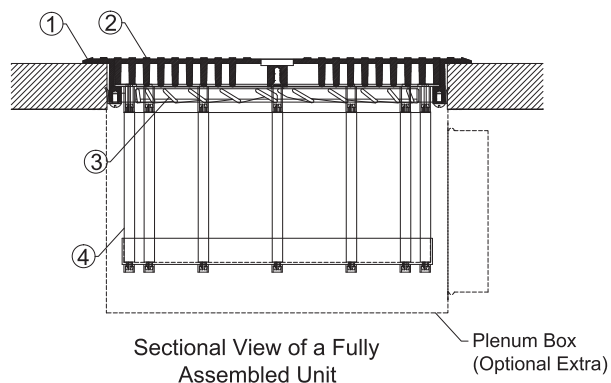


Table 1: Quick selection for 'FBA/250' diffuser.

Diffuser Type/Size	Pressure Drop											
	5Pa		10Pa		15Pa		20Pa		25Pa		30Pa	
	l/s	NC	l/s	NC	l/s	NC	l/s	NC	l/s	NC	l/s	NC
FBA/250	36	>NC20	47	NC20	55	NC25	63	NC30	70	NC35	77	NC40

Order Code

FBA - 3 - T - K - S - A

/ 250

Surfaces of diffuser core and trim flange :

Die-cast and deburred

1

Die-cast, deburred, stove-enamelled in black, face skimmed

3

Die-cast, deburred, face skimmed

4

Control element for swirling discharge pattern

without twirl
with twirl

Ø
T

A Plenum Box
Ø Without dirt trap

S Dirt trap without volume adjustments elements

SW Dirt trap including winged volume adjustment elements

K Trim Flange