

Cell Grilles

Type 'TCG'

The Cell Grille is suitable for either supply or, exhaust air application. The perforated grille face is made from heavy gauge galvanised steel sheet. The grille is secured to the wall with steel mounting frame.

Opposed blade damper (OBD) can be provided to the back of each grille if required, which is adjusted from the grille face.

In addition, circular spigot connection can be provided if requested.

Fixings and jacking screws required to install the cell grille to the wall shall be provided by others. 32% free area with 3mm diameter holes on 5mm pitch centres

The grille section and the rear mounting frame is powder coated in matt white to RAL 9010 as standard supply. Other RAL colour code can be provided if requested.

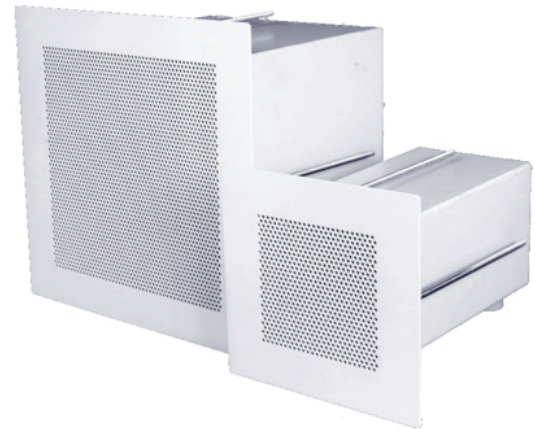
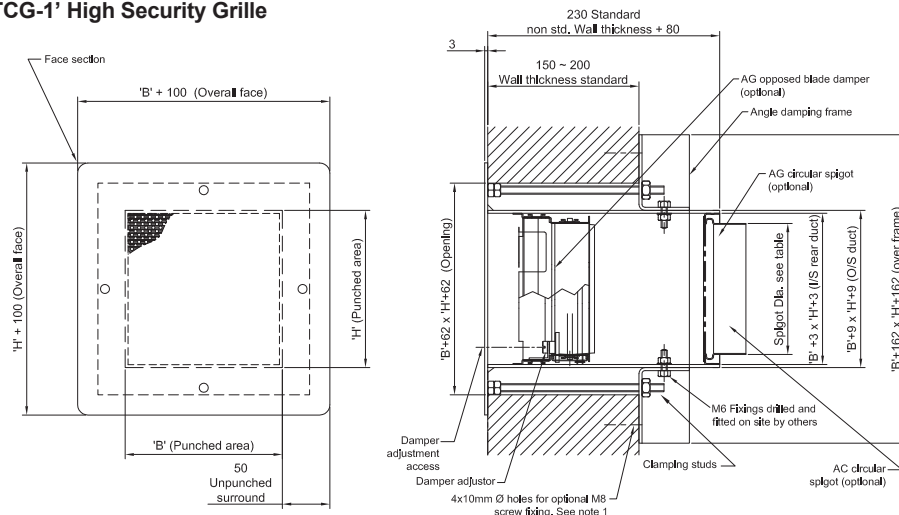


Table 1: Quick Selection Table for 'TCG' Grille

Grille Size (mm) L x H	Air flow (l/s)	ΔP (Pa)	Throw @ 0.5 m/s
150 x 150	51	27	5.7
200 x 200	80	21	6.9
250 x 250	120	19	8.3
300 x 300	158	16	8.9

Note: Based on NC 35 with 8 dB room attenuation and with only one grille in the room.

Type 'TCG-1' High Security Grille



Order Code

Type
TCG-1 High Security Grille
TCG-2 Medium Security Grille
TCG-3 Low Security Grille

- A Grille Face only.
- AG Grille with an opposed blade damper (OBD).
- C Grille with circular spigot connection.
- AGC Grille complete with OBD and circular spigot connection.

TCG1-AG / 200 x 200 / S1 / RAL 9002

0 – Matt white to RAL 9010 (Standard supply).

S1 – Powder coating (and specify RAL code except for RAL 9010 in matt).

Unit size (L x H) as per table 1 on page 3.

Note: For further details, please refer to TROX KLIMA Asia Pacific catalogue Ref. M 1.1/4/EN/--.